

Worried about inspecting playgrounds?

InspecS®

Safety obligations

The responsibility for ensuring that playground equipment and its installation meet the requirements of the standard lies with the playground operator. They must also ensure that regular inspections and maintenance are carried out as set out in the standard. The standard DIN EN 1176-1:2017, which applies throughout Europe, regulates the safety requirements for playground equipment and its safety testing, inspection and maintenance.

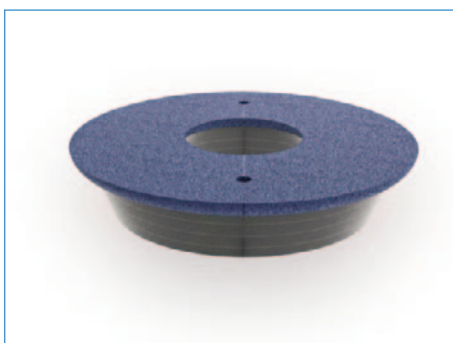


The play equipment must also be installed according to these specifications. Those who carry out the installation work are responsible in this case.

Since 1st July 2018, playground equipment foundations must also be inspected by an expert during the main annual inspection. To do so, the foundations must be exposed, which in the case of synthetic impact-attenuating surfaces means a considerable amount of work and downtime due to closing and securing the site, followed by demolition, disposal and restoration work.

Another standard (DIN EN 1177:2018-03) defines values for the shock-absorbing properties of the surface below playground equipment and describes the inspection method to be applied.

Despite annually recurring manual demolition and restoration effort, repairs can usually only be carried out in an aesthetically inadequate manner (also known as “patches”). Moreover, the impact-attenuating properties of the original synthetic impact-attenuating surface can also only be restored to a limited extent. It would then be necessary to time-consumingly verify each of the renewed positions individually.



InspecS® product solution: Obligations meet fun

InspecS® inspection covers are undetachably fitted around vertical or inclined poles and can be easily raised by the inspector, allowing the underlying foundations to be inspected without restriction. Using the InspecS® tool kit, it is also possible to retrofit in existing areas. InspecS® inspection covers universally fulfil the impact-attenuating properties of the surrounding impact-attenuating surface as per DIN EN 1177, both in new constructions and when retrofitted.

For more information, see www.inspecs.de

Product designation

InspecS® 380

Structure of the product designation:

Product name® Outer diameter/Overall height/Penetration
dimension-colour**InspecS®****Summarising the product benefits**

- One-off installation instead of annually recurring construction costs
- resulting in huge cost and time savings
- Can be retrofitted into existing synthetic impact-attenuating surfaces
- Continuous impact-attenuating properties as per DIN EN 1177:2018-03; seamlessly embedded
- No need to close the playground to carry out the required inspection
- Provides the ability to inspect spontaneously without requiring logistical preparation while equipment is in use
- Can be used with vertical or inclined poles
- Can be produced for different pole geometries and diameters
- Potential safety test recognisable on the inspection cover
- Theft-proof
- Saves considerable resources/prevents waste



We reserve the right to make technical changes to improve our products and adapt them to standards and legal requirements. For more information, see www.inspecs.de